

BIG LOVE - JO WARWICK

Divine Feminine Empowerment In Relationship





As modern women we are hindered with such conflicting energy between our dreams of empowerment, love and relationships, and the disempowerment of our conditioning by the past and family stories.

Born with perfect alignment with Love we gradually lose our TRUTH for what is right for us, as we lose parts of our Soul , energy and power along the way. Our success, joy and capacity for DEEP LOVE in relationship comes from the reclaiming, healing and embodying those fragments we have left behind. Freeing

ourselves from patterns of servitude, martyrdom and self sacrifice, and closing the door on disappointment, loneliness separation from LOVE, by reconnecting to the fullness of ourselves. As we reclaim each fragment as our own, release the energetic wounding we are gifted with our divine feminine empowerment as we emerge as a QUEEN!

We must claim, accept & LOVE each of these parts to integrate their energy! Which of these do you most resonate with? Which do you avoid & hide? Which one do you desire to be?



THE LONELY CHILD (*disempowerment*)

We hold the LONELY CHILD within. A lost child, who's separated from LOVE. Always seeking to find the light and reconnect but still out of reach, because we feel disappointed & heartbroken by love. This disempowered pattern is displayed through repetitive dating and serial connections, founded on a fear of feeling lonely. Afraid to look and fully see our internal disconnected relationship from LOVE, so the

LONELY CHILD is always seeking for someone else to give the magic spell to feel 'FOUND', safe, connected and whole. Buried childhood wounds and unexpressed grief cause this feminine disempowered pattern. Our inner CHILD must be found, embraced, claimed, listened to & nurtured by us so we feel LOVED, worthy, trusting and free once more to play & create once more.

BIG LOVE - JO WARWICK

The Forgotten Princess

(disempowerment)

Stuck in the WAITING Game

The FORGOTTEN PRINCESS is the disempowered pattern of WAITING. Stuck in a self-created tower, fantasy, or dream world separated from LOVE. Longing and hoping to be rescued by the Fairy Godmother Universe to deliver our Prince/Princess, if we wait long enough! Yet this Princess will only ever meet FROGS! Suitors who are unworthy and never good enough to climb the tower or slay the dragon. The Fairy Godmother Universe seems to have forgotten about us, as we sit and WAIT! Repetitive cycles of WAITING, disappointment and unavailable suitors display this disempowered pattern. This Princess needs to break herself FREE with LOVE!





WICKED BITCH (*False Empowerment*)

The WICKED BITCH uses her sexuality for power. She is extremely desirable to immature suitors who seek purely physical-based & power game relationships. Youthful & physically attractive as she seeks perfection and control, as a high achiever. This pattern is an illusion of empowerment, for on the inside, the WICKED BITCH is as cold and isolated from LOVE as this image. Unexpressed deep heartbreak &

disappointment drive this behaviour & repetitive 'You can't catch me, sexual dating patterns. Unavailable emotionally, the WICKED BITCH will leap from one admirer to another, yet deeply feeling alone. Even though she is more empowered than the Forgotten Princess there still hides an Unworthy Child, behind the defensive barriers. This WICKED BITCH could be powerful in Love & Sex instead!

BIG LOVE - JO WARWICK

The Goddess

(Emerging Empowerment)

Divine & Adored *[but not embodied]*

The Goddess is the emerging Divine Feminine Empowerment with LOVE. Embracing the GODDESS energy is to connect to the spiritual, the SOUL, & mysteries of the DIVINE. The GODDESS weaves magic as she co-creates with the Universe as her partner. She is adored and admired but from afar! Worshipped, respected, and loved by suitors, but always out of reach. Seen as an inspiration, but suitors feel unworthy to bed her. A relationship cannot be hers as she will not be contained, so she cannot be supported by it either! The GODDESS is a woman who is fully aware of her power but not embodied in the physical realm and material manifestations that match her DIVINE BEING.





THE QUEEN - FULL EMBODIMENT OF POWER

The QUEEN is the full embodiment of FEMININE POWER. Connected to LOVE, the UNIVERSE & the physical realm. She is the embodied & integrated mystical loving GODDESS, the innocent, trusting, playful child, the demanding Princess, and the wonderfully sexual transformed WITCH! She is a powerful manifestation of WORTH & VALUE! No longer proving to be BETTER or MORE but in fact, accepting she is EVERYTHING. Secure & confident in her skin. Capable of taking on LIFE with open arms & guided by a wise and open heart. The Queen is the

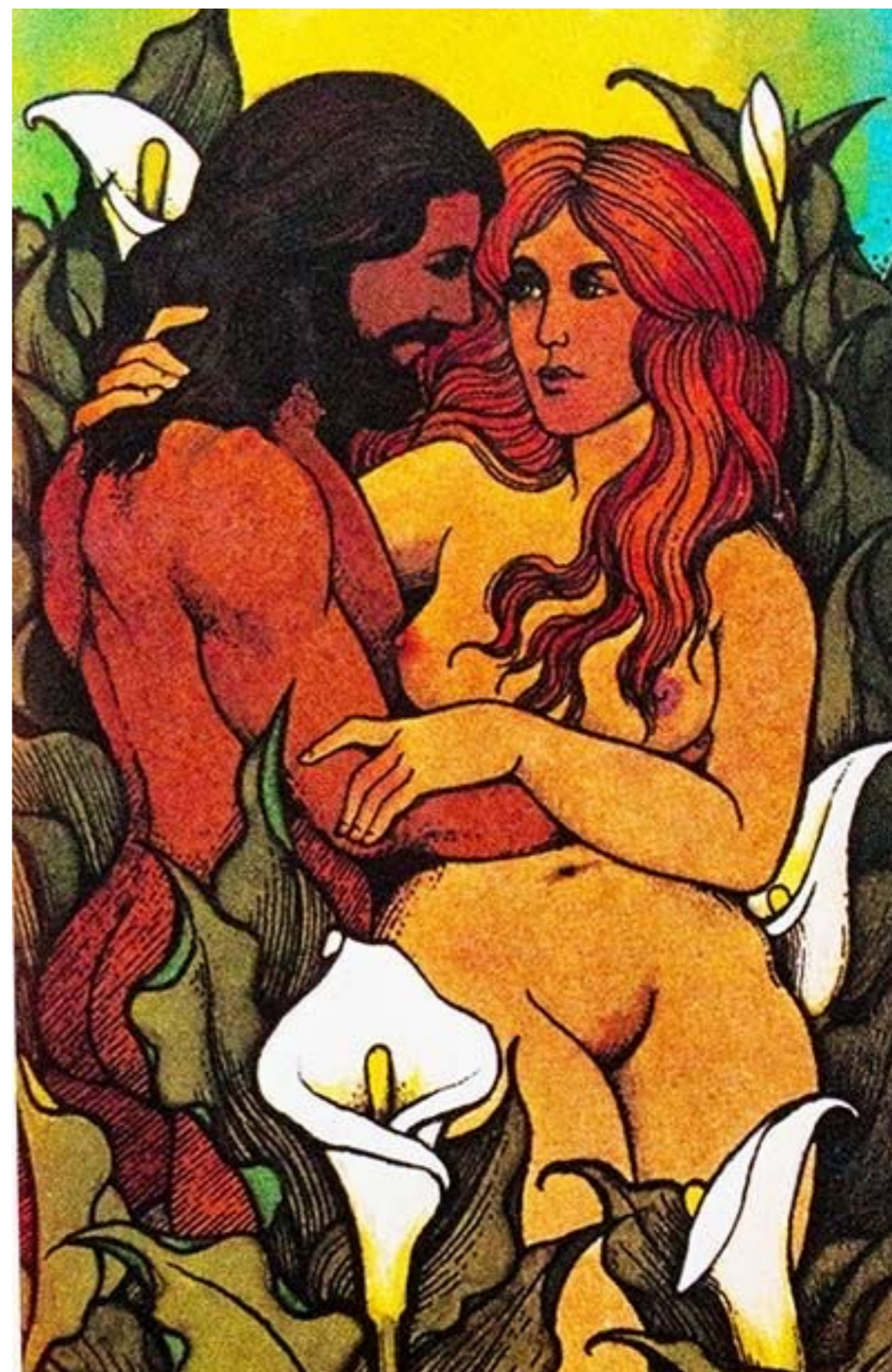
ruler of her land, tends to her internal subjects (the inner child, Princess, Bitch and Goddess) & she does not abdicate her throne in a relationship! For she knows who she is and what she has to offer. Proud of her achievements, her appearance, her energy, her soul & trusting in her judgement. She has a voice and uses it lovingly. She has nothing to PROVE because she accepts her POWER! This QUEEN will not settle for less than a true equal match - a KING,(Empowered Divine Masculine Energy in another) because anything less would dishonour her & LOVE.

BIG LOVE - JO WARWICK

The Divine Lovers

EMPOWERED SOUL PARTNERSHIP!

Soul Partnership is the UNION OF DIVINE LOVERS in the physical realm. The QUEEN is ready to call in her SOUL PARTNER because she is secure and autonomous in her relationship with the UNIVERSE & LOVE. Aligned with who she is in her mind, body, heart, sexuality and SOUL, she is now the fully empowered frequency of LOVE. Trusting herself completely, she allows her SOUL to guide her way through signs and communication from the UNIVERSE. Called by this empowered frequency, her Soul Partner is a mirror to her embodied empowerment. In Union, this unfolding partnership is driven by TRUST, FREEDOM, LOVE and JOY!



Divine Feminine Empowerment Invocation

Dear Divine,

In this moment I now choose the full power and flow of LOVE. Help me!
I choose to surrender the past and allow my connection with Divine Love within me.
I accept full alignment with who I truly am.
I am love. I am.

I now accept that my Lonely Child as worthy, loved and valued.
I allow my child to be free to play and create in joy & trust!

I now accept my Forgotten Princess as rightfully full of demands for what I need and desire.
I allow my Princess to speak up and speak out my truth freely and with Love for myself.

I now accept my Wicked Bitch as wonderful, sensual and loved.
I allow myself to be magnet seductress, to wield my sexuality like magical Witch.

I now accept my Goddess as my divine self. I allow her to radiate through my body and to be the divine guidance to
my choices, desires and expressions. I allow her to be seen, heard and felt.

I now accept I am a Queen. I am sovereign. I am fierce and loving. I am the aligned ruler of my land, in charge of my
choices, my boundaries, my life and my creations. I am the embodiment of my Divine Feminine Power. I am truly
worthy and ready for my King Lover and Divine Partner.
I am. I am. I am.

I now allow this empowered Soul Union & Partnership to unfold with ease & grace in the abundant flow of trust,
freedom, joy and LOVE.

Thank you! Thank you! Thank you! It is done!